

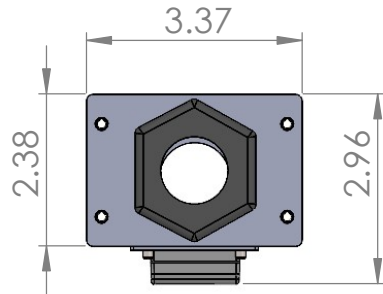
2

1

Ultra High Density Fiber Breakout

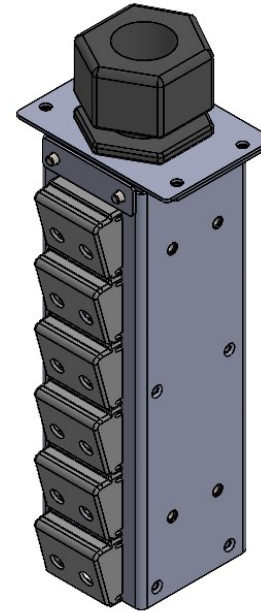
Breakout high fiber count cables for direct termination or splicing

B

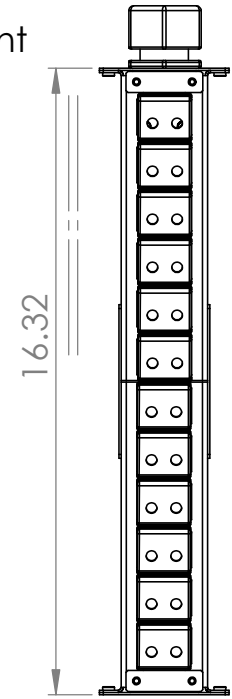


Part Number	Fiber Count
XBR+1728	1728
XBR+3456	3456
XBR+6912	6912

XBR+1728	1728
XBR+3456	3456
XBR+6912	6912

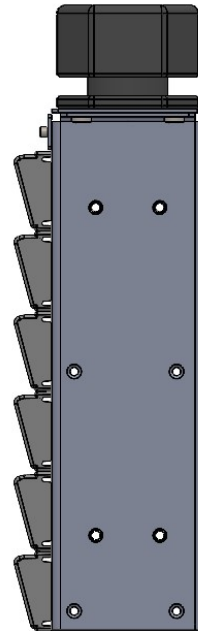
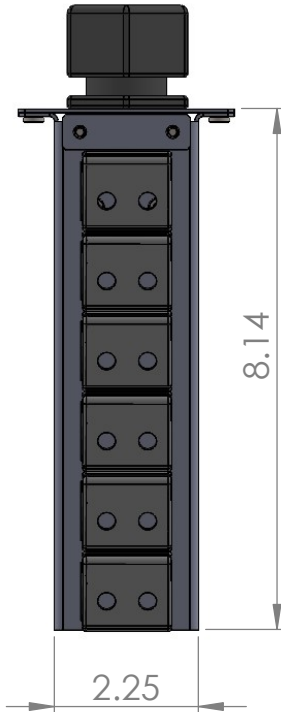


Wall/Rack Mount Bracket



B

A



Notes:
 16 Gauge Cold Rolled Steel
 Durable Powder Coat Finish
 Snap-fit adapters are plastic

Features:
 Fast and easy installation
 Wall mountable, rack mountable
 Variety of tubing types and styles available
 Stackable for higher fiber count cables
 (3456 or 6912 fibers)

Use to route fibers to splice trays or in conjunction with
 UBK or UBR Kits for direct termination

3456/6912

A

PROPRIETARY AND CONFIDENTIAL
 THE INFORMATION CONTAINED IN THIS
 DRAWING IS THE SOLE PROPERTY OF
 Opticonx, Inc. ANY
 REPRODUCTION IN PART OR AS A WHOLE
 WITHOUT THE WRITTEN PERMISSION OF
 Opticonx, Inc. IS
 PROHIBITED.

www.opticonx.com



2

1