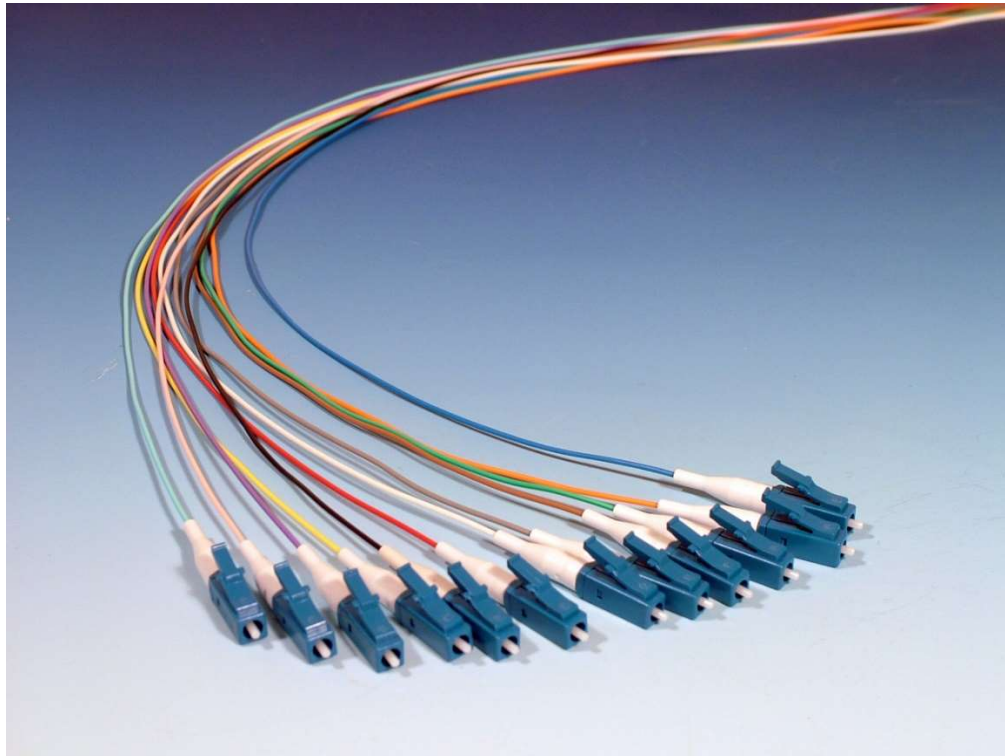


# Fiber Optic Pigtailed



## Fiber Optic Pigtailed and Pigtail Packs for Splicing

Opticonx, Inc. manufactures a full line of singlemode simplex and duplex pigtailed ready for fusion splice applications in 900 micron and jacketed configurations. Pigtailed are available with standard or bend insensitive fiber. Custom lengths, fiber types, jacket colors, and connector types are available.

Opticonx manufactures our cable assemblies using only top quality components, equipment, and processes resulting in product that meets or exceeds even the most demanding specifications. Our standard 15 year limited warranty ensures years of worry free service.

## Color Coded Pigtailed Packs

Opticonx, Inc. pigtail packs are color coded for ease of identification in the panel and in the splice tray (non color coded pigtailed are available) and are available up to 12 fibers.

## Connector Geometry

Controlling the endface geometry of fiber optic connectors is key to ensuring long term reliability and performance of a fiber optic cable assembly. Radius, apex offset, and fiber undercut are controlled and optimized by continually working to refine and improve the processes, equipment, and training that are involved in manufacturing. Opticonx utilizes the latest equipment and highly trained personnel to ensure quality product that will work well now and well into the future.



## Fiber Performance

Fiber Type	Core/Clad O.D. (um)	Max Attenuation (db/km) 1310nm/1550nm	Zero Dispersion Wavelength nm	Cutoff Wavelength	Mode Field
OS1	8.3/125	1.0/0.8	1301.5 TO 1321.5	1260 +/- 70	9.2+/-0.4
OS2	8.3/125	1.0/0.8			

## Connector Performance

Connector Type	Part Number Designator	Max IL (dB)	Typical IL (dB)	Min Return Loss (dB)
ST	1	0.50	0.20	-55
SC	2	0.50	0.20	-55
LC	14	0.50	0.20	-55
MTRJ	12	0.50	0.20	-55
FC	3	0.50	0.20	-55
MTP	MP	0.50	0.25	-55
SC/APC	2A	0.50	0.25	-65
FC/APC	3A	0.50	0.25	-65
LC/APC	LA	0.50	0.25	-65

## Custom Assemblies

Bring us your requirements and we will work with you to customize a solution. From color coding jackets to non-standard cable or connector types, Opticonx has the equipment, knowledge, and experience to meet even the most demanding applications.

## Documentation

Opticonx assemblies are tested 100% for insertion loss and return loss. Printed or digital test results are available on request. If required, interferometer results can be included (must specify before ordering). Use and care instructions, part number, and description on included data card.

## Ordering Information

### Splice Packs

#### SP-AAB C – DD

AA- 06 for 6 fiber, 12 for 12 fiber

B=9 for SM, 5 for OM1, 52 for OM2, 53 for OM3, 54 for OM4

C= connector designator Z= length in meters (2 digit)

### Simplex and Duplex Pigtaills

#### A B C P D LL (length in meters)

A=9 for SM, 5 for OM1, 52 for OM2, 53 for OM3, 54 for OM4

B= 1 for simplex, 2 for duplex C = 9 for 900um, 2 for 2mm, 3 for 3mm D=connector designator

Example: 9192A03 is a Singlemode simplex 900 micron SC/APC 3 meter pigtail

## Ribbon Pigtails

Opticonx ribbon pigtails are 12 fiber bare or jacketed ribbon fiber cables broken out on one end with single fiber terminations. The other end is left unterminated for fusion splicing. They are typically used in mass fusion splicing applications. Also available pre-wired into high density Xtreme+ cassettes for secure storage of individual mass fusion splices.

## Ordering Information

### Ribbon Pigtail

#### **SP-AR-BC-D-LL** (Length in meters)

Where:

A= B for bare ribbon, J for jacketed ribbon

B=9 for SM, 5 for OM1, 52 for OM2, 53 for OM3, 54 for OM4

C=connector designator

D=breakout length=A for 12", B for 24", C for 36"

#### **Xtreme+ Ribbon Pigtail Splice Cassette**

Opticonx Xtreme+ ribbon pigtail splice cassette is a pre-wired solution for managing fusion splice pigtails for mass fusion applications. Use with Opticonx Xtreme line of patch panels or order retrofit brackets for legacy LGX panels.

## Ordering Information

### **X+01 A B RP01**

Where:

A=9 for SM, 5 for OM1, 52 for OM2, 53 for OM3, 54 for OM4

B=14 for LC, 31 for LC/APC

#### **LGX Retrofit Brackets:**

P3XRF-1 (1 cassette per LGX space)

P3XRF-2 (2 cassettes per LGX space)