



Fiber Optic Cable Assemblies

Opticonx, Inc. manufactures a full line of singlemode and multimode simplex, duplex, and multi-fiber cable assemblies. Assemblies feature singlemode and multimode OM1, OM2, OM3, OM4, and OM5 fiber. Custom lengths, fiber types, jacket colors, and connector types are available. Opticonx manufactures cable assemblies using only top-quality components, equipment, and processes resulting in product that meets or exceeds even the most demanding specifications. Our standard 15 year limited warranty ensures years of worry free service.

Patch Cords

Simplex and duplex cable assemblies, commonly referred to as patch cords, are commonly used as interconnects between equipment and fiber patch panels, or from equipment to equipment.

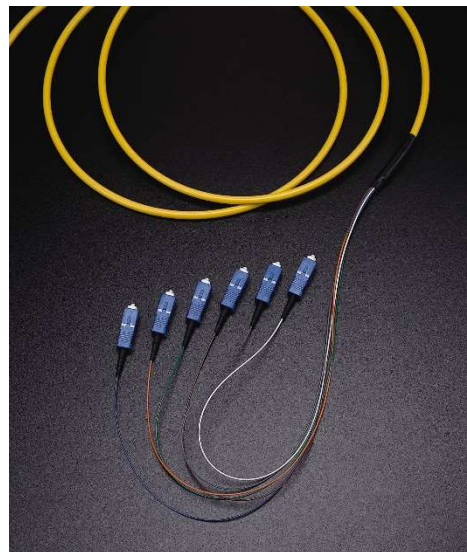


Pigtails

Simplex and duplex cable assemblies terminated on only one end are commonly referred to as pigtails. These assemblies are most often used for fusion splicing, or when terminating the second end to a device.

Multi-Fiber Assemblies

Multi-fiber cable assemblies are available in a variety of configurations and connector types. Cable types include indoor only versions and indoor/outdoor versions in UL types OFNR or OFNP, and strictly outdoor version. For added protection, the cable can be pre-installed in an aluminum interlocked armor conduit. Also included in multi-fiber assemblies are a full range of MTP® and MPO assemblies.



MTP® (MPO) Assemblies

Multi-fiber assemblies terminated on one or both ends with MPO style connectors are typically utilized in pre-terminated Fiber systems and help ease and speed installation. These Assemblies are terminated in groups of 12 or 24 with a single MPO connector on one or both ends. When terminated on Both ends with an MPO style connector, it is considered a “trunk” or “backbone” cable. When terminated on one end With an MPO style connector and on the other end with Multiple single fiber connectors, it is considered a fanout Cable, or harness, and is typically used to connect to Equipment, or within a cassette as part of a preterminated Fiber system (as in Opticonx Xtreme system). MTP® is a High quality form of an MPO connector, and is a registered Trademark of USCONEC.



An Xtreme cassette utilizes an MTP harness to interface between the backbone cable and the equipment.



An MTP to LC harness offers direct connection between backbone and

Quality You Can Trust

Opticonx has been manufacturing high performance cable assemblies since 1996. We use the highest quality connectors and components, and utilize state of the art equipment and techniques to produce world class standard and custom fiber assemblies. Our quality department ensures every assembly is fully tested to the latest industry standards and beyond.

Connector Performance

Connector Type	Part Number Designator	Max IL (dB)	Max RL (SM) (db)
ST	01	0.5	-45
SC	02	0.5	-55
LC	14	0.5	-55
MTRJ	12	0.5	NA
FC	03	0.5	-55
MTP	MP	0.5	-65
SC/APC	2A	0.5	-65
FC/APC	3A	0.5	-65
LC/APC	LA	0.5	-65

Cable Assembly Part Numbering

A	B	C	D	LL (length)	E (m=meters, f=feet)	F
A= fiber type				B=fiber count	C=Jacket	D= Connector end A
9- Singlemode				1- simplex	09=900um	1=ST
6- OM1				2- duplex	2M=2mm	2=SC
5- OM2				6- 6 fiber	3M=3mm	3=FC
53- OM3				12- 12 fiber	2U=2mm uniboot	12=MTRJ
54- OM4					3U=3mm uniboot	14=LC
					NA=unspecified (6f,12f)	MF=MTP(f)
						MM=MTP(m)
						2A=SC/APC
						3A=FC/APC
						LA=LC/APC
E= Connector end B						
Same						

Examples

92141403M Singlemode duplex LC/LC 3 meter

5322202F Multimode OM3 duplex SC/SC 2 feet

Color coded cable assemblies available with jacket colors as follows:
blue, orange, green, brown, gray, white, red, black, yellow, violet, pink, aqua

Custom Assemblies

Bring us your requirements and we will work with you to customize a solution. From color coding jackets to nonstandard cable or connector types, Opticonx has the equipment, knowledge, and experience to meet even the most demanding applications.

Packaging

Every Opticonx manufactured cable assembly is 100 percent optically inspected and tested for insertion loss and return loss. These results are available in digital format upon request. If required, interferometer results can also be included (must be specified before ordering). Each assembly is individually bagged with part number, description, and use and care instructions.

