



Xtreme8 Solutions base 8

FOR DATA CENTERS AND STORAGE AREA NETWORKS

Xtreme8™ is Opticonx's Base-8 cabling solution for easy migration of 10/40/100 and 400G parallel optics deployments in the data center. This end to end plug and play system of modules, trunks, patch panels, harnesses and patch cables provide complete utilization of fiber cabling infrastructure. Xtreme low loss components combine to provide high performance cabling links in data centers and storage area networks.





OM3/OM4 Duplex LC to MTP Module

Xtreme8™ MTP® to Duplex LC Module

Xtreme8™ modules are the interface between 8 fiber MTP® trunks and duplex LC patch cables.

High density

Up to 144 fibers in a 1U patch panel

Shuttered LC Adapters

Safer operation, eliminates need for dust caps

Low insertion loss

Better link loss performance for longer distances and more interconnect points

Bend insensitive fibers

Higher performance fiber. Standard for all cassette modules

Ordering Information

DESCRIPTION	PART NUMBER
8F, OM3 Bend Insensitive, Low Loss	X8CMCB14UTLL
8F, OM3 Bend Insensitive, Xtreme Low Loss	X8CMCB14UTXL
8F, OM4 Bend Insensitive, Low Loss	X8CMDB14UTLL
8F, OM4 Bend Insensitive, Xtreme Low Loss	X8CMDB14UTXL
8F, OS2 Bend Insensitive, Low Loss	X8CMBA15UTLL
8F, OS2 Bend Insensitive, Xtreme Low Loss	X8CMBA15UTXL

Specifications

GENERAL SPECIFICATIONS	
Fiber Count/Port Count	8/4
Front Adapter Type	Shuttered LC
Front Adapter Color	Aqua (OM3,OM4), Blue (OS2)
Rear Adapter Type	MTP® (pinned)
Rear Adapter Color	Aqua (OM3,OM4), Green (OS2)
Polarity	Universal Polarity
OPTICAL SPECIFICATIONS	
Loss Type	Maximum Module Insertion Loss
Low Loss(LL)	0.50dB (OM3/OM4), 1.00dB (OS2)
Xtreme Low Loss(XL)	0.35dB (OM3/OM4), 0.60dB (OS2)



Xtreme8™ MTP® Trunk Cables

Xtreme8™ Trunks are factory terminated with 8 fiber MTP® connectors for interconnecting with Xtreme8™ LC to MTP® modules and harnesses.

Low insertion loss

Better link loss performance for longer distances and more interconnect points

Bend insensitive fibers

Standard for OM3/OM4 fibers, optional for OS2

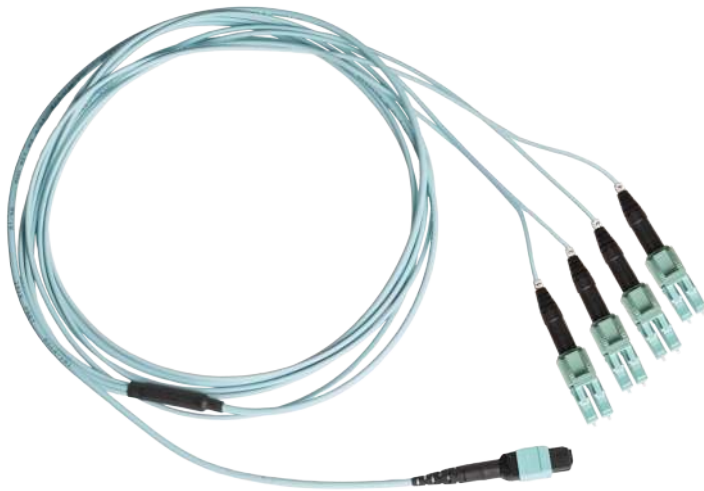
Ordering Information

DESCRIPTION	PART NUMBER
8F, OM4 Bend Insensitive,Xtreme Low Loss, w/pulling eye, Method B	X8TM1DBXLLLF1B*
16F, OM4 Bend Insensitive,Xtreme Low Loss, w/pulling eye, Method B	X8TM2DBXLLLF1B*
24F, OM4 Bend Insensitive,Xtreme Low Loss, w/pulling eye, Method B	X8TM3DBXLLLF1B*
32F, OM4 Bend Insensitive,Xtreme Low Loss, w/pulling eye, Method B	X8TM4DBXLLLF1B*
48F, OM4 Bend Insensitive,Xtreme Low Loss, w/pulling eye, Method B	X8TM6DBXLLLF1B*
*Replace LLL with length in feet	

Specifications

GENERAL SPECIFICATIONS	
Fiber Count	8F, 16F, 24F, 32F, 48F
Connector	8 Fiber MTP®, 8 Fiber MTP Elite® Non-pinned
Connector Color	Aqua (OM3/OM4), Green (OS2)
Polarity	Method B
OPTICAL SPECIFICATIONS	
Loss Type	Maximum Insertion Loss
Low Loss(LL)	0.50dB (OM3/OM4), 1.0dB (OS2)
Xtreme Low Loss(XL)	0.35dB (OM3/OM4), 0.60dB (OS2)
Transmission loss	1.0dB/km (OM3/OM4), 0.40dB/km (OS2)
10G and 40/100G Transmission Distance meters	300/100 (OM3), 550/150 (OM4), 80K/40K (OS2)

*MTP and MTP Elite are registered trademarks of USConec



Xtreme8™ Data Center Harness

Xtreme8™ QFSP to FSP+ Data Center Harnesses

Xtreme8™ harnesses interconnect end point switches and storage devices with cabling trunks.

Low insertion loss

Better link loss performance for longer distances and more interconnect points

Uniboot polarity switchable connectors

Field switchable, tool-less connector

Bend insensitive fibers

Standard for OM3/OM4 fibers, optional for OS2

Ordering Information

DESCRIPTION	PART NUMBER
8F, OM3 Bend Insensitive, Low Loss, 7 ft, Universal Polarity, MTP® pinned, 18 in. staggered Uniboot LC breakout, Aqua	X8HNCBL07FU623
8F, OM3 Bend Insensitive, Xtreme Low Loss, 7 ft, Universal Polarity, MTP® pinned, 18 in. staggered Uniboot LC breakout, Aqua	X8HNCBX07FU623
8F, OM4 Bend Insensitive, Low Loss, 7 ft, Universal Polarity, MTP® pinned, 18 in. staggered Uniboot LC breakout, Aqua	X8HNDBL07FU623
8F, OM4 Bend Insensitive, Xtreme Low Loss, 7 ft, Universal Polarity, MTP® pinned, 18 in. staggered Uniboot LC breakout, Aqua	X8HNDBX07FU623
8F, OS2 Bend Insensitive, Low Loss, 7 ft, Universal Polarity, MTP® pinned, 18 in. staggered Uniboot LC breakout, Yellow	X8HNBAL07FU623
8F, OS2 Bend Insensitive, Xtreme Low Loss, 7 ft, Universal Polarity, MTP® pinned, 18 in. staggered Uniboot LC breakout, Yellow	X8HNBAX07FU623

Specifications

GENERAL SPECIFICATIONS	
Fiber Count	8
FSP+ Connector	Duplex LC Uniboot
FSP+ Connector Color	Aqua (OM3,OM4), Blue (OS2)
QSFP Connector	MTP® (pinned)
QSFP Connector Color	Aqua (OM3), Magenta (OM4), Green (OS2)
Polarity	Universal
OPTICAL SPECIFICATIONS	
Loss Type	Maximum Harness Insertion Loss
Low Loss(LL)	0.50dB (OM3/OM4), 1.0dB (OS2)
Xtreme Low Loss(XL)	0.35dB (OM3/OM4), 0.60dB (OS2)

*MTP and MTP Elite are registered trademarks of USConec

Xtreme8™ Patch Panels



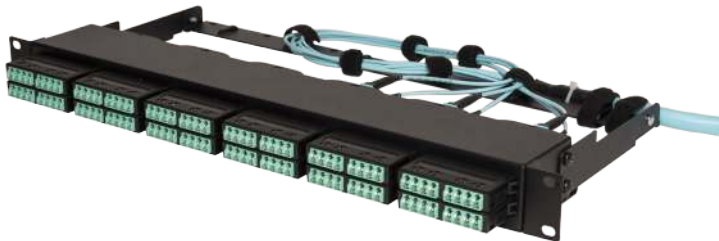
Xtreme8™ 1U Slide Out Panel

Xtreme8™ rack mount patch panels house up to 18 Xtreme8™ cassette modules for a total of 72 duplex ports in a 1 RU space. Xtreme8™ panels come in two designs, a slide out tray version and static panel version.

The slide out version completely houses the incoming trunk cable, modules, and outgoing patch cords. The slide out shelf provides for complete access to both front and rear compartments from the front of the rack or cabinet.

Ordering Information

DESCRIPTION	PART NUMBER
1U, rack mount, 12 module capacity (48 ports), slide out shelf	FBX8121U
1U, rack mount, 18 module capacity (72 ports), slide out shelf	FBX8181U



Xtreme8™ Fixed Panel w/rear cable manager

The static version Xtreme8™ 1U panel is completely open for easy front and rear access. It is ideally suited for top of rack (TOR) applications. It can house up to 18 Xtreme8™ modules for up to 72 ports. It can be ordered stand alone or with optional rear trunk cable manager.

Ordering Information

DESCRIPTION	PART NUMBER
1U, rack mount, 12 module capacity (48 ports), fixed panel	FBX8TOR121U
1U, rack mount, 12 module capacity (48 ports), fixed panel, w/rear cable manager	FBX8TOR121UCM
1U, rack mount, 18 module capacity (72 ports), fixed panel	FBX8TOR181U
1U, rack mount, 18 module capacity (72 ports), fixed panel, w/rear cable manager	FBX8TOR181UCM



Xtreme8™ Uniboot LC Duplex Jumpers

Xtreme8™ Uniboot Polarity Switchable Patch Cords feature high density, small form factor LC connectors mated to 2.0 mm round 2-fiber cable. They are used to connect switches or network devices in fiber networks directly or interconnect structured cabling systems in a fiber network. Polarity changes can be made in the field quickly, without the use of tools, to the correct fiber mapping polarity.

Ordering Information

DESCRIPTION	XTREME LOW LOSS PERFORMANCE	LOW LOSS PERFORMANCE
OM3, 2-fiber, Plenum Rated, A/B Polarity, Bend Insensitive Fiber, Aqua Jacket, Aqua Connector	P3XJCB14XMLLL*	P3XJCB14LMLLL*
OM4, 2-fiber, Plenum Rated, A/B Polarity Bend Insensitive Fiber, Aqua Jacket, Aqua Connector	P3XJDB14XMLLL*	P3XJDB14LMLLL*
OS2, 2-fiber, Plenum Rated, A/B Polarity, Yellow Jacket, Blue Connector (LC-UPC)	P3XJAA15XMLLL*	P3XJAA15LMLLL*
OS2, 2-fiber, Plenum Rated, A/B Polarity Bend Insensitive Fiber, Yellow Jacket, Blue Connector, (LC-UPC)	P3XJBA15XMLLL*	P3XJBA15LMLLL*

* Replace LLL with length in meters. Standard stock lengths are 1, 2, 3, 5, 7, 10 meters.

CONNECTER SPECIFICATIONS				
	Multimode		Single-mode	
	Xtreme Low Loss (XL)	Low Loss (LL)	Xtreme Low Loss (XL)	Low Loss (LL)
Insertion Loss	0.15 dB Maximum	0.25 dB Maximum	0.25 dB Maximum	0.35 dB Maximum
Return Loss	> - 25 dB Minimum		> -55 dB UPC/ > -65 dB APC	
Durability	500 Matings		500 Matings	
Repeatability	< 0.20 dB		< 0.20 dB	
Operating Environment	- 40° C to 75° C		- 40° C to 75° C	
Cable Retention	20 lbs / 88 Newtons		20 lbs / 88 Newtons	
Rohs	Rohs Compliant		Rohs Compliant	

*MTP and MTP Elite are registered trademarks of USConec



Xtreme8™ MTP® Jumper

Xtreme8™ MTP® Jumpers

Xtreme8™ MTP® jumpers are used to cross connect MTP® trunks to active electronics, other MTP® trunks, or extend MTP® trunks. They feature 8 fiber, 3.0mm round plenum rated cable with internal aramid yarn strength members. Cables can be ordered pinned, non-pinned, or a combination of each. They are available in Low-Loss (LL) and Xtreme Low-Loss (XL) performances.

Bend Insensitive fibers are standard in all Xtreme8™ MTP® jumpers.

Ordering Information

DESCRIPTION	XTREME LOW LOSS PERFORMANCE	LOW LOSS PERFORMANCE
OM3, 8-fiber, Plenum Rated, Method B, Bend Insensitive Fiber, Aqua Jacket, Aqua Connector, MTP® pinned to non-pinned	X8JCB96XM LLL*B	X8JCB96LM LLL*B
OM4, 8-fiber, Plenum Rated, Method B, Bend Insensitive Fiber, Aqua Jacket, Aqua Connector, MTP® pinned to non-pinned	X8JDB96XM LLL*B	X8JDB96LM LLL*B
OS2, 8-fiber, Plenum Rated, Method B, Yellow Jacket, Green Connector, MTP® pinned to non-pinned	X8JAA96XM LLL*B	X8JAA96LM LLL*B
OS2, 8-fiber, Plenum Rated, Method B, Bend Insensitive Fiber, Yellow Jacket, Green Connector, MTP® pinned to non-pinned	X8JBA96XM LLL*B	X8JBA96LM LLL*B

* Replace LLL with length in meters. Standard stock lengths are 1, 2, 3, 5, 7, 10 meters.

Connector Performance

LOSS TYPE	DESCRIPTION	INSERTION LOSS	CONNECTOR
L	Low-Loss	0.50 dB (OM3, OM4)/0.75 dB (OS2)	MTP®
X	Xtreme Low-Loss	0.35 dB (OM3, OM4)/0.35 dB (OS2)	MTP Elite

*MTP and MTP Elite are registered trademarks of USConec

About Opticonx

Opticonx, Inc. designs, manufactures, and markets a full line of passive fiber optic connectivity components and systems at our Putnam, Connecticut manufacturing facility. Since our inception in 1995, Opticonx has focused on incorporating top notch design with the highest quality components to produce fiber optic connectivity products and solutions for voice, video, and data applications. Our products include components like cable, cable assemblies, patch panels and splitter kits, and complete Layer 1 infrastructure like our innovative P3Xtreme™ plug and play fiber system for Data Centers and Campus wide systems.

By focusing all of our efforts on passive fiber solutions, and leveraging our ability to design and manufacture our products under one roof, Opticonx is able to offer rapid prototype and time-to-market custom solutions, keeping our products on the cutting edge of next generation technology. In particular, Opticonx has been a leader in pre-terminated MTP/MPO systems because we manufacture the complete system and it's components, including the cable, at our US manufacturing facility.

These same capabilities provide us unique manufacturing capabilities for OEM and private label applications and customers.



Site Certified

Opticonx Certified Sites are Data Center installations designed by Opticonx utilizing 100% of our P3Xtreme™ products, installed and tested by Opticonx certified installers. Certified Sites are eligible for our extended product and performance warranty program. Each site installation is evaluated before hand to determine if it is eligible for Site Certification. Consult with your Opticonx representative beforehand if you're interested in this program.



Cabling Guides

Need help designing a structured cabling system that will meet your current and future needs? Our experts have extensive experience with the most popular network switches/devices and network topologies from Cisco, Arista, Brocade, HP, Dell and many more. Our designer's purpose is to deliver a cabling infrastructure that is cost effective, fully utilizes the installed cabling plant, and protects your investment with an eye towards future network upgrades. You'll receive a comprehensive and detailed document laying out your cabling infrastructure and layout.

To download this catalog, please visit opticonx.com.



**45 Danco Road
Putnam, CT 06260**

Toll Free: 888 748-6855
Tel: 508 987-9288
Fax: 508 987-9287

Sales: sales@Opticonx.com
Customer Service: support@Opticonx.com

