



**6912 Fibers in 48U**



**XTREME DENSITY (XD)**

**HIGH DENSITY FIBER DEPLOYMENTS MADE EASY**

**Perfect for Hyperscale Data Center Access**

**Modular Configurable Solution Available in 2U/4U/6U**

**FOR DESIGN HELP, EMAIL [INQUIRY@OPTICONX.COM](mailto:INQUIRY@OPTICONX.COM) OR CALL 888.748.6855**



## 2U 288 Fiber Version (XDRTI288LCU250)

XD is a pre-terminated solution panel from Opticonx, the worldwide leader in data center fiber cabling. XD provides the highest density in the industry. XD can be configured with different connector types, cable types and any pigtail length for a custom solution for your data center, SAN/LAN or central office.

Opticonx XD High Density Ready-to-Splice Fiber Panel is a 2, 4 or 6U fiber panel loaded with LC pigtails loaded into Xtreme+ cassettes routed to splice trays. The 6U panel features 3 slide-out shelves, each of which house 288 fibers in Xtreme+ cassettes to manage, protect and store individual fibers which are broken out into 250um or 200um ribbon fiber.

### **Xtreme+**

The ribbon fanouts are housed within the Xtreme+ series fiber cassettes. The cassettes feature built in cable management which eliminates the need to manage 900um fibers within the patch panel. The cassettes are removable for maintenance and service, and aid in fiber identification.

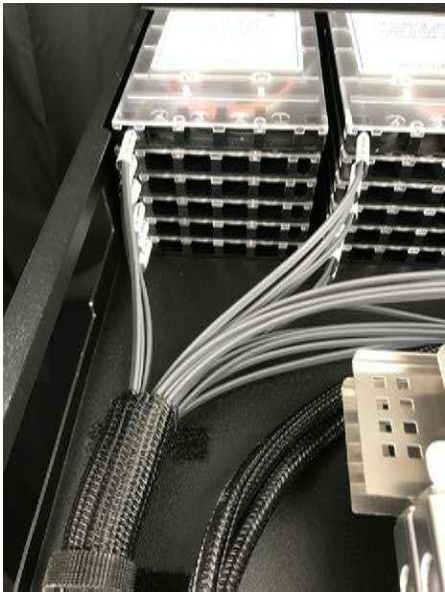
Dust-shuttered, VFL compatible LC adapters eliminate the need for dust caps and make fiber identification by visible laser source easy.

### **Slide out Shelves**

The XD Series features slide out shelves that make accessing the fiber jumpers and splice trays easy. Each shelf houses 288 fibers and its own splice trays. The shelves have positive stops for jumper management, cassette access and splice tray access.

ORDERING INFORMATION*		
Part Number	Panel Size	Fiber Density
XDRTI288LCU250	2RU	288
XDRTI576LCU250	4RU	576
XDRTI864LCU250	6RU	864

\* Other standard and custom configurations are available



PHYSICAL SPECIFICATIONS				
Panel	Height	Width	Depth	Weight
2RU	3.5"	17.125" (without brackets)	22"	28 lbs
4RU	7.0"	17.125" (without brackets)	22"	56 lbs
6RU	10.5"	17.125" (without brackets)	22"	85 lbs



OPTICAL SPECIFICATIONS	
Insertion loss singlemode	<- .35dB UPC
Reflectance singlemode	<-55dB UPC, <-65dB APC



**Why should you buy from Opticonx?**

- Opticonx manufactures a world class product with industry best lead times
- All products are proudly made in the USA
- Opticonx solutions meet and exceed our client's expectations
- Front and back access
- Scalable and modular solutions
- Supports LC and MTP/MPO applications



**FOR DESIGN HELP, EMAIL [INQUIRY@OPTICONX.COM](mailto:INQUIRY@OPTICONX.COM) OR CALL 888.748.6855**